

# CEM

Powering your Business

THREE PHASE INDUCTION MOTOR



CONTENT

CEM THREE PHASE INDUCTION MOTOR

PRODUCT INTRODUCTION	3
GENERAL SPECIFICATION	4
PERFORMANCE PARAMETERS	5
MOUNTING DIMENSION	9





*CEM motor series are manufactured according to IEC 60072 standard and are rated IE2 high-efficient.*

The CEM motor series offers a wide range of motors to various industries where reliability and efficiency are paramount. Our motors meet the driving demands of operating machinery such as fans, pumps, machine tools and compressors for both on shore and off shore applications. Industrial applications include marine, oil & gas, healthcare and transportation.

This proprietary motor range has been specially engineered and crafted to deliver on high efficiency, long-lasting durability and yet produce low noise and vibration emission levels. The robust housing ensures strength, durability and resilience against harsh environments – proving its proficiency well across the board.

CEM motors are built with upmost quality in mind and come with a standard 2-year warranty against defects. With stock readily available and service support from our 24-hour workshop, CEM motors' assured quality delivers both satisfaction and peace of mind to all our clients.



Standard: JB/T 10447

Frame size: H80 ~ 355mm

Rated power: 0.18kW ~ 315kW

Degrees of energy efficiency:

Grade3 (GB18613) & IE1 (IEC60034-30)

Voltage and frequency: 380 ~ 420V/690V/50Hz; 440/480V/60Hz

Degrees of protection: IP55

Degrees of insulation/Temperature rise: F/B

Installation method: B3/B5/B35/V1

Ambient temperature: -15 °C ~ +40 °C

Relative humidity should be less than 90%

Altitude should be lower than 1000 m above sea level

Cooling Method: IC411



3000r/min 2-pole, 3000 synchronous speed

Motor Type	Rated Power (kW)	Rated Speed r/min	Rated Current A	Rated Eff. η %	Power Factor cosφ	Rated Torque Nm	Ist In	Tst Tn	Tmax Tn	Tmin Tn	LW dB(A) no load	LW dB(A) load	Net Weight kg
CEM80MA	0.75	2840	1.8	75.2	0.83	2.5	6.1	2.2	2.3	1.5	67	69	16
CEM80MB	1.1	2840	2.6	76.3	0.84	3.7	6.9	2.2	2.3	1.5	67	69	17
CEM90S	1.5	2850	3.5	78.6	0.84	5	7.0	2.2	2.3	1.5	72	74	20
CEM90L	2.2	2850	4.9	81.1	0.85	7.4	7.0	2.2	2.3	1.4	72	74	25
CEM100L	3	2880	6.3	82.8	0.87	10	7.5	2.2	2.3	1.4	76	78	30
CEM112L	4	2880	8.2	84.4	0.88	13.3	7.5	2.2	2.3	1.4	77	79	38
CEM132SA	5.5	2900	11.1	85.8	0.88	18.1	7.5	2.2	2.3	1.2	80	82	57
CEM132SB	7.5	2900	14.9	87.2	0.88	24.5	7.5	2.2	2.3	1.2	80	82	60
CEM160MA	11	2930	21.2	88.5	0.89	35.8	7.5	2.2	2.3	1.2	86	88	100
CEM160MB	15	2930	28.5	89.6	0.89	48.8	7.5	2.2	2.3	1.2	86	88	110
CEM160L	18.5	2930	34.7	90.1	0.90	60.4	7.5	2.2	2.3	1.1	86	88	125
CEM180M	22	2940	41.0	90.6	0.90	71.4	7.5	2.0	2.3	1.1	89	91	175
CEM200LA	30	2950	55.3	91.5	0.90	97.2	7.5	2.0	2.3	1.1	92	94	225
CEM200LB	37	2950	67.8	92.2	0.90	120	7.5	2.0	2.3	1.1	92	94	245
CEM225M	45	2970	82.0	92.7	0.90	145	7.5	2.0	2.3	1.0	92	94	280
CEM250M	55	2970	99.5	93.3	0.90	177	7.5	2.0	2.3	1.0	93	95	380
CEM280S	75	2970	135	93.8	0.90	241	7.0	2.0	2.3	0.9	94	96	510
CEM280M	90	2970	160	94.0	0.91	290	7.1	2.0	2.3	0.9	94	96	580
CEM315S	110	2980	195	94.2	0.91	353	7.1	1.8	2.2	0.9	96	98	850
CEM315M	132	2980	233	94.7	0.91	423	7.1	1.8	2.2	0.9	96	98	945
CEM315LA	160	2980	281	94.8	0.91	513	7.1	1.8	2.2	0.9	99	101	1020
CEM315LB	200	2980	347	95.0	0.92	641	7.1	1.8	2.2	0.8	99	101	1180
CEM355M	250	2980	433	95.4	0.92	802	7.1	1.6	2.2	0.8	103	105	1740
CEM355L	315	2980	544	95.5	0.92	1010	7.1	1.6	2.2	0.8	103	105	1900

1500r/min 4-pole, 1500 synchronous speed

Motor Type	Rated Power (kW)	Rated Speed r/min	Rated Current A	Rated Eff. η %	Power Factor cosφ	Rated Torque Nm	Ist In	Tst Tn	Tmax Tn	Tmin Tn	LW dB(A) no load	LW dB(A) load	Net Weight kg
CEM80MA	0.55	1390	1.6	71.1	0.75	3.8	5.2	2.4	2.3	1.7	58	63	17
CEM80MB	0.75	1390	2.1	73.2	0.76	5.2	6.0	2.3	2.3	1.6	58	63	18
CEM90S	1.1	1400	2.8	76.3	0.77	7.5	6.0	2.3	2.3	1.6	61	66	20
CEM90L	1.5	1400	3.7	78.7	0.78	10.2	6.0	2.3	2.3	1.6	61	66	23
CEM100LA	2.2	1420	5.1	81.2	0.81	14.8	7.0	2.3	2.3	1.5	64	69	30
CEM100LB	3	1420	6.7	82.7	0.82	20.2	7.0	2.3	2.3	1.5	64	69	35
CEM112M	4	1440	8.8	84.4	0.82	26.5	7.0	2.3	2.3	1.5	65	70	40
CEM132S	5.5	1440	11.7	86.0	0.83	36.5	7.0	2.3	2.3	1.4	71	76	60
CEM132M	7.5	1440	15.6	87.2	0.84	49.8	7.0	2.3	2.3	1.4	71	76	70
CEM160M	11	1460	22.5	88.5	0.84	72	7.0	2.2	2.3	1.4	75	79	110
CEM160L	15	1460	30.0	89.6	0.85	98.2	7.5	2.2	2.3	1.4	75	79	130
CEM180M	18.5	1470	36.2	90.2	0.86	120	7.5	2.2	2.3	1.2	76	80	165
CEM180L	22	1470	42.9	90.6	0.86	143	7.5	2.2	2.3	1.2	76	80	180
CEM200L	30	1470	58.0	91.6	0.86	195	7.2	2.2	2.3	1.2	79	83	240
CEM225S	37	1480	70.0	92.2	0.87	239	7.2	2.2	2.3	1.2	81	85	280
CEM225M	45	1480	84.8	92.7	0.87	291	7.2	2.2	2.3	1.1	81	85	310
CEM250M	55	1480	103	93.2	0.87	355	7.2	2.2	2.3	1.1	83	86	400
CEM280S	75	1480	138	93.8	0.88	484	6.8	2.2	2.3	1.0	86	89	540
CEM280M	90	1480	165	94.0	0.88	581	6.8	2.2	2.3	1.0	86	89	620
CEM315S	110	1480	201	94.7	0.88	710	6.9	2.1	2.2	1.0	93	96	870
CEM315M	132	1480	240	95.0	0.88	852	6.9	2.1	2.2	1.0	93	96	990
CEM315LA	160	1480	287	95.1	0.89	1032	6.9	2.1	2.2	1.0	97	100	1050
CEM315LB	200	1480	359	95.2	0.89	1290	6.9	2.1	2.2	0.9	97	100	1250
CEM355MA	220	1490	382	95.2	0.90	1411	6.9	2.1	2.2	0.9	101	104	1650
CEM355MB	250	1490	443	95.3	0.90	1603	6.9	2.1	2.2	0.9	101	104	1750
CEM355LA	280	1490	480	95.3	0.90	1796	7.1	2.1	2.2	0.9	101	104	1790
CEM355LB	315	1490	558	95.3	0.90	2020	7.1	2.1	2.2	0.8	101	104	1900



1000r/min 6-pole, 1000 synchronous speed

Motor Type	Rated Power (kW)	Rated Speed r/min	Rated Current A	Rated Eff. η %	Power Factor cosφ	Rated Torque Nm	Ist In	Tst Tn	Tmax Tn	Tmin Tn	LW dB(A) no load	LW dB(A) load	Net Weight kg
CEM80MA	0.37	890	1.3	62.2	0.70	4.0	4.7	1.9	2.0	1.5	54	61	15
CEM80MB	0.55	890	1.8	65.2	0.72	5.9	4.7	1.9	2.1	1.5	54	61	17
CEM90S	0.75	910	2.3	69.1	0.72	7.9	4.7	2.0	2.1	1.5	57	64	20
CEM90L	1.1	910	3.2	72.2	0.73	11.5	5.3	2.0	2.1	1.3	57	64	23
CEM100L	1.5	920	4.0	76.2	0.75	15.6	5.5	2.0	2.1	1.3	61	68	30
CEM112M	2.2	940	5.6	79.1	0.76	22.4	5.5	2.0	2.1	1.3	65	72	38
CEM132S	3	960	7.4	81.3	0.76	29.9	6.5	2.1	2.1	1.3	69	76	55
CEM132MA	4	960	9.8	82.2	0.76	39.8	6.5	2.1	2.1	1.3	69	76	63
CEM132MB	5.5	960	12.9	84.1	0.77	54.7	6.5	2.1	2.1	1.3	69	76	70
CEM160M	7.5	970	17.2	86.3	0.77	73.9	6.5	2.0	2.1	1.3	73	80	105
CEM160L	11	970	24.5	87.7	0.78	108	6.5	2.0	2.1	1.2	73	80	120
CEM180L	15	970	31.6	89.2	0.81	148	7.0	2.0	2.1	1.2	73	80	175
CEM200LA	18.5	970	38.6	90.1	0.81	182	7.0	2.1	2.1	1.2	76	82	220
CEM200LB	22	970	44.6	90.2	0.83	217	7.0	2.0	2.1	1.2	76	82	235
CEM225M	30	980	59.2	91.6	0.84	293	7.0	2.0	2.1	1.2	76	82	300
CEM250M	37	980	71.0	92.1	0.86	361	7.0	2.1	2.1	1.2	78	84	370
CEM280S	45	980	85.8	92.6	0.86	439	7.0	2.1	2.0	1.1	80	85	480
CEM280M	55	980	105	93.0	0.86	536	7.0	2.1	2.0	1.1	80	85	535
CEM315S	75	990	142	93.7	0.86	724	6.7	2.0	2.0	1.0	85	90	790
CEM315M	90	990	170	94.0	0.86	869	6.7	2.0	2.0	1.0	85	90	880
CEM315LA	110	990	207	94.1	0.86	1062	6.7	2.0	2.0	1.0	85	90	997
CEM315LB	132	990	245	94.3	0.87	1274	6.7	2.0	2.0	1.0	85	90	1100
CEM355MA	160	990	291	94.7	0.88	1544	6.7	1.9	2.0	1.0	92	96	1400
CEM355MB	200	990	364	94.7	0.88	1930	6.7	1.9	2.0	0.9	92	96	1750
CEM355L	250	990	456	94.7	0.88	2413	6.7	1.9	2.0	0.9	92	96	1950

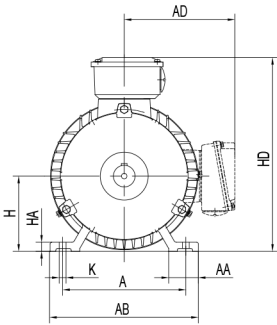
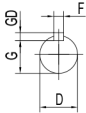
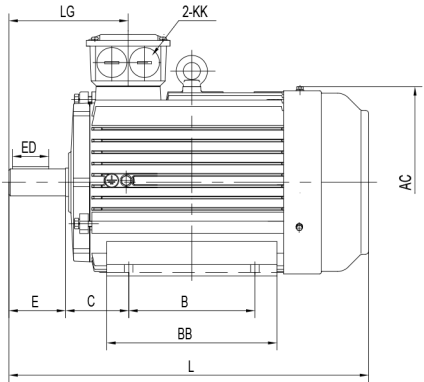
750r/min 8-pole, 750 synchronous speed

Motor Type	Rated Power (kW)	Rated Speed r/min	Rated Current A	Rated Eff. η %	Power Factor cosφ	Rated Torque Nm	Ist In	Tst Tn	Tmax Tn	Tmin Tn	LW dB(A) no load	LW dB(A) load	Net Weight kg
CEM80MA	0.18	630	0.9	51.1	0.61	2.8	3.3	1.8	1.9	1.3	52	60	15
CEM80MB	0.25	640	1.2	54.2	0.61	3.7	3.3	1.8	1.9	1.3	52	60	17
CEM90S	0.37	660	1.5	62.2	0.61	5.4	4	1.8	1.9	1.3	56	64	20
CEM90L	0.55	660	2.2	63.1	0.61	8.0	4	1.8	2.0	1.3	56	64	23
CEM100LA	0.75	690	2.4	70.2	0.67	10.4	4	1.8	2.0	1.3	59	67	30
CEM100LB	1.1	690	3.4	72.1	0.69	15.2	5	1.8	2.0	1.2	59	67	35
CEM112M	1.5	690	4.4	74.2	0.70	20.8	5	1.8	2.0	1.2	61	69	40
CEM132S	2.2	710	5.9	79.2	0.71	29.6	6	1.8	2.0	1.2	64	72	52
CEM132M	3	710	7.8	80.2	0.73	40.4	6	1.8	2.0	1.2	64	72	60
CEM160MA	4	720	10.2	81.1	0.73	53.1	6	1.9	2.0	1.2	68	76	90
CEM160MB	5.5	720	13.6	83.2	0.74	73.0	6	1.9	2.0	1.2	68	76	105
CEM160L	7.5	720	17.7	85.7	0.75	99.5	6	1.9	2.0	1.2	68	76	120
CEM180L	11	730	25.4	87.6	0.75	144	6.5	2.0	2.0	1.1	70	78	150
CEM200L	15	730	34.0	88.2	0.76	196	6.6	2.0	2.0	1.1	73	80	215
CEM225S	18.5	730	41.0	90.1	0.76	242	6.6	1.9	2.0	1.1	73	80	265
CEM225M	22	740	47.2	90.6	0.78	284	6.6	1.9	2.0	1.1	73	80	295
CEM250M	30	740	63.3	91.2	0.79	387	6.5	1.9	2.0	1.1	75	82	380
CEM280S	37	740	77.5	91.6	0.79	478	6.6	1.9	2.0	1.1	76	83	485
CEM280M	45	740	94.1	92.1	0.79	581	6.6	1.9	2.0	1.0	76	83	570
CEM315S	55	740	111	92.9	0.81	710	6.6	1.8	2.0	1.0	82	88	750
CEM315M	75	740	150	93.6	0.81	968	6.2	1.8	2.0	0.9	82	88	810
CEM315LA	90	740	177	94.0	0.82	1162	6.4	1.8	2.0	0.9	82	88	1000
CEM315LB	110	740	216	94.1	0.82	1420	6.4	1.8	2.0	0.9	82	88	1180
CEM355MA	132	740	259	94.2	0.82	1704	6.4	1.8	2.0	0.9	90	95	1500
CEM355MB	160	740	314	94.3	0.82	2066	6.4	1.8	2.0	0.9	90	95	1800
CEM355L	200	740	385	94.7	0.83	2582	6.4	1.8	2.0	0.9	90	95	1900

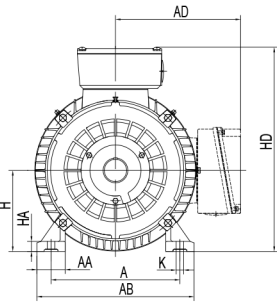
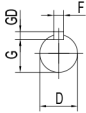
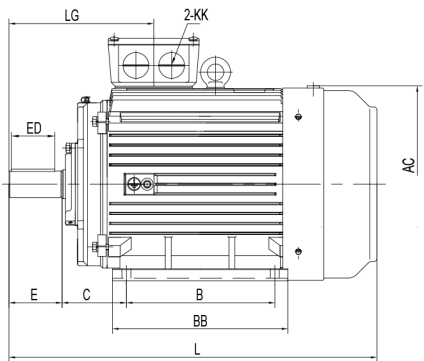
MOUNTING DIMENSIONS B3

Frame	A	AA	AB	AC	AD	B	BB	C	D	E	ED	F	G	GD	H	HA	HD	K	KK	L	LG
CEM 80 MA	125	34	160	175	150	100	130	50	19	40	22	6	15.5	6	80	10	230	10	M25×1.5	295	106
CEM 90 S	140	36	180	190	165	100	135	56	24	50	32	8	20	7	90	12.5	260	10	M25×1.5	320	124
CEM 90 L	140	36	180	190	165	125	160	56	24	50	32	8	20	7	90	12.5	260	10	M25×1.5	345	124
CEM 100 L	160	40	200	215	170	140	182	63	28	60	40	8	24	7	100	14	275	12	M25×1.5	385	140
CEM 112 L	190	45	230	236	195	140	195	70	28	60	40	8	24	7	112	14	310	12	M32×1.5	410	145
CEM 132 S	216	52	265	275	215	140	205	89	38	80	56	10	33	8	132	16	350	12	M32×1.5	480	169
CEM 132 M	216	52	265	275	215	178	245	89	38	80	56	10	33	8	132	16	350	12	M32×1.5	520	169
CEM 160 M	254	65	320	330	265	210	260	108	42	110	80	12	37	8	160	19	425	14.5	M40×1.5	610	270
CEM 160 L	254	65	320	330	265	254	305	108	42	110	80	12	37	8	160	19	425	14.5	M40×1.5	655	270
CEM 180 M	279	70	350	380	280	241	285	121	48	110	80	14	42.5	9	180	22	440	14.5	M40×1.5	680	277
CEM 180 L	279	70	350	380	280	279	325	121	48	110	80	14	42.5	9	180	22	440	14.5	M40×1.5	720	277
CEM 200 L	318	80	390	420	315	305	355	133	55	110	90	16	49	10	200	25	505	18.5	M50×1.5	760	298
CEM 225 S(4-8P)	356	75	435	465	335	286	350	149	60	140	100	18	53	11	225	28	550	18.5	M50×1.5	825	340
CEM 225 M(2P)	356	75	435	465	335	311	375	149	55	110	80	16	49	10	225	28	550	18.5	M50×1.5	820	310
CEM 225 M(4-8P)	356	75	435	465	335	311	375	149	60	140	100	18	53	11	225	28	550	18.5	M50×1.5	850	340
CEM 250 M(2P)	406	100	485	520	375	349	450	168	60	140	100	18	53	11	250	33	635	24	M63×1.5	925	357
CEM 250 M(4-8P)	406	100	485	520	375	349	450	168	65	140	100	18	58	11	250	33	635	24	M63×1.5	925	357
CEM 280 S(2P)	457	105	550	570	405	368	490	190	65	140	100	18	58	11	280	35	695	24	M63×1.5	970	350
CEM 280 S(4-8P)	457	105	550	570	405	368	490	190	75	140	100	20	67.5	12	280	35	695	24	M63×1.5	990	350
CEM 280 M(2P)	457	105	550	570	405	419	540	190	65	140	100	18	58	11	280	35	695	24	M63×1.5	1025	350
CEM 280 M(4-8P)	457	105	550	570	405	419	540	190	75	140	100	20	67.5	12	280	35	695	24	M63×1.5	1045	350
CEM 315 S(2P)	508	125	630	650	500	406	515	216	65	140	100	18	58	11	315	45	810	28	M63×1.5	1160	387
CEM 315 M(2P)	508	125	630	650	500	457	625	216	65	140	100	18	58	11	315	45	810	28	M63×1.5	1270	387
CEM 315 L(2P)	508	125	630	650	500	508	625	216	65	140	100	18	58	11	315	45	810	28	M63×1.5	1270	387
CEM 315 S(4-8P)	508	125	630	650	500	406	515	216	80	170	130	22	71	14	315	45	810	28	M63×1.5	1190	417
CEM 315 M(4-8P)	508	125	630	650	500	457	625	216	80	170	130	22	71	14	315	45	810	28	M63×1.5	1300	417
CEM 315 L(4-8P)	508	125	630	650	500	508	625	216	80	170	130	22	71	14	315	45	810	28	M63×1.5	1300	417
CEM 355 M(2P)	610	125	735	735	645	560	850	254	75	140	110	20	67.5	12	355	49	1000	28	M63×1.5	1600	420
CEM 355 L(2P)	610	125	735	735	645	630	850	254	75	140	110	20	67.5	12	355	49	1000	28	M63×1.5	1600	420
CEM 355 M(4-8P)	610	125	735	735	645	560	850	254	95	170	140	25	86	14	355	49	1000	28	M63×1.5	1630	450
CEM 355 L(4-8P)	610	125	735	735	645	630	850	254	95	170	140	25	86	14	355	49	1000	28	M63×1.5	1630	450

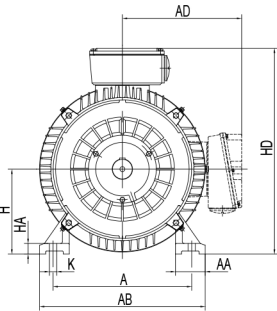
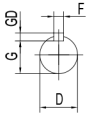
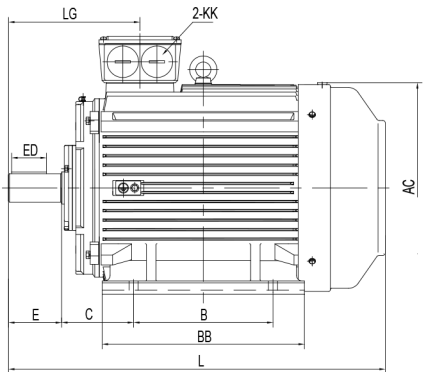
80-132



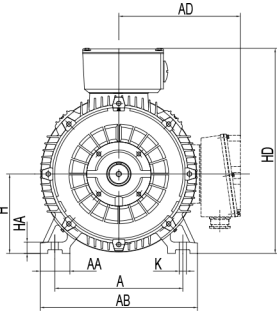
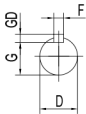
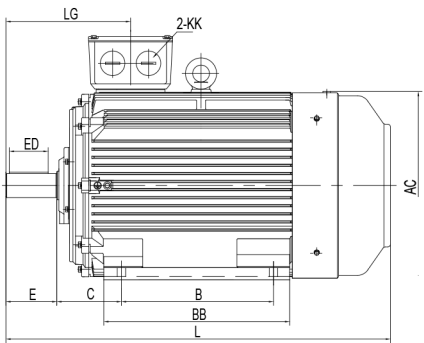
160-200



225-280



315-355



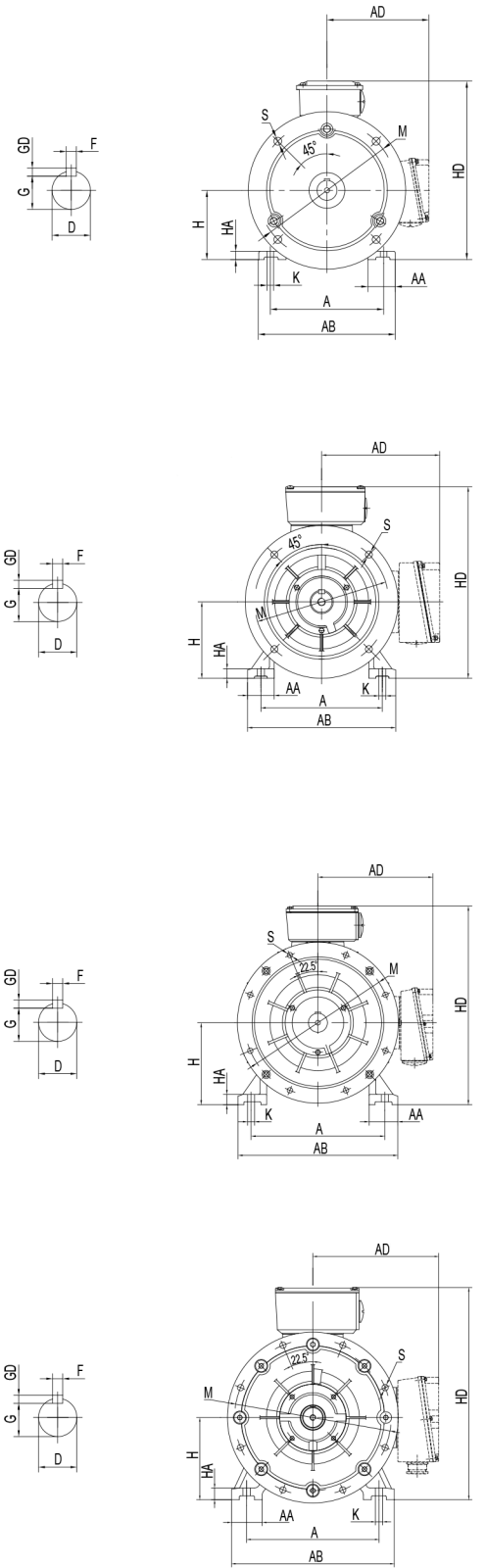


## 80-132

HA	HD	K	KK	L	LG	LA	M	N	P	S	T
10	230	10	M25x1.5	295	106	12	165	130	200	12	3.5
12.5	260	10	M25x1.5	320	124	12	165	130	200	12	3.5
12.5	260	10	M25x1.5	345	124	12	165	130	200	12	3.5
14	275	12	M25x1.5	385	140	14	215	180	250	14.5	4
14	310	12	M32x1.5	410	145	14	215	180	250	14.5	4
16	350	12	M32x1.5	480	169	14	265	230	300	14.5	4
16	350	12	M32x1.5	520	169	14	265	230	300	14.5	4
19	425	14.5	M40x1.5	610	270	15	300	250	350	18.5	5
19	425	14.5	M40x1.5	655	270	15	300	250	350	18.5	5
22	440	14.5	M40x1.5	680	277	15	300	250	350	18.5	5
22	440	14.5	M40x1.5	720	277	15	300	250	350	18.5	5
25	505	18.5	M50x1.5	760	298	17	350	300	400	18.5	5
28	550	18.5	M50x1.5	825	340	20	400	350	450	18.5	5
28	550	18.5	M50x1.5	820	310	20	400	350	450	18.5	5
28	550	18.5	M50x1.5	850	340	20	400	350	450	18.5	5
33	635	24	M63x1.5	925	357	20	500	450	550	18.5	5
33	635	24	M63x1.5	925	357	20	500	450	550	18.5	5
35	695	24	M63x1.5	970	350	22	500	450	550	18.5	5
35	695	24	M63x1.5	990	350	22	500	450	550	18.5	5
35	695	24	M63x1.5	1025	350	22	500	450	550	18.5	5
35	695	24	M63x1.5	1045	350	22	500	450	550	18.5	5
45	810	28	M63x1.5	1160	387	24	600	550	660	24	6
45	810	28	M63x1.5	1270	387	24	600	550	660	24	6
45	810	28	M63x1.5	1270	387	24	600	550	660	24	6
45	810	28	M63x1.5	1190	417	24	600	550	660	24	6
45	810	28	M63x1.5	1300	417	24	600	550	660	24	6
45	810	28	M63x1.5	1300	417	24	600	550	660	24	6
49	1000	28	M63x1.5	1600	420	25	740	680	800	24	6
49	1000	28	M63x1.5	1600	420	25	740	680	800	24	6
49	1000	28	M63x1.5	1630	450	25	740	680	800	24	6
49	1000	28	M63x1.5	1630	450	25	740	680	800	24	6

160-200

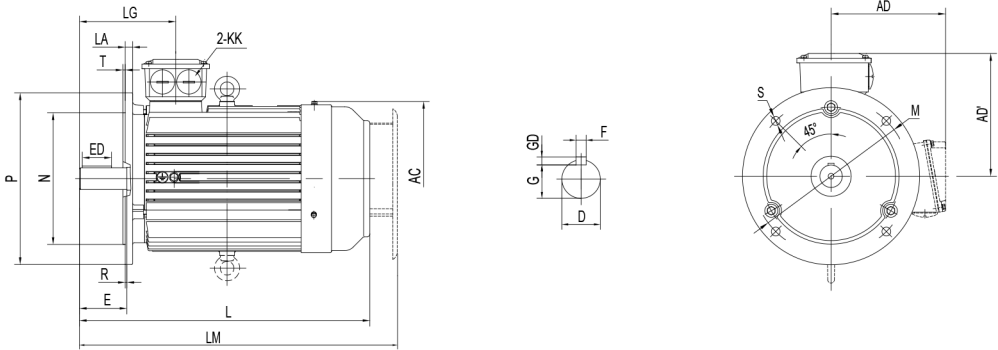
315-355



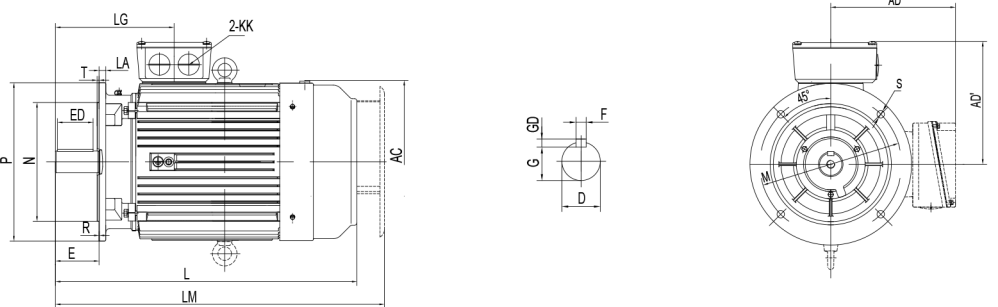
MOUNTING DIMENSIONS B5 & V1

FRAME	AC	AD	D	E	ED	F	G	GD	KK	L	LM	LA	LG	M	N	P	S	T
CEM 80 MA	175	150	19	40	22	6	15.5	6	M25x1.5	295	-	12	106	165	130	200	12	3.5
CEM 90 S	190	165	24	50	32	8	20	7	M25x1.5	320	-	12	124	165	130	200	12	3.5
CEM 90 L	190	165	24	50	32	8	20	7	M25x1.5	345	-	12	124	165	130	200	12	3.5
CEM 100 L	215	170	28	60	40	8	24	7	M25x1.5	385	-	14	140	215	180	250	14.5	4
CEM 112 L	236	195	28	60	40	8	24	7	M32x1.5	410	-	14	145	215	180	250	14.5	4
CEM 132 S	275	215	38	80	56	10	33	8	M32x1.5	480	-	14	169	265	230	300	14.5	4
CEM 132 M	275	215	38	80	56	10	33	8	M32x1.5	520	-	14	169	265	230	300	14.5	4
CEM 160 M	330	265	42	110	80	12	37	8	M40x1.5	610	665	15	270	300	250	350	18.5	5
CEM 160 L	330	265	42	110	80	12	37	8	M40x1.5	655	720	15	270	300	250	350	18.5	5
CEM 180 M	380	280	48	110	80	14	42.5	9	M40x1.5	680	755	15	277	300	250	350	18.5	5
CEM 180 L	380	280	48	110	80	14	42.5	9	M40x1.5	720	795	15	277	300	250	350	18.5	5
CEM 200 L	420	315	55	110	90	16	49	10	M50x1.5	760	845	17	300	350	300	400	18.5	5
CEM 225 S(4-8P)	465	335	60	140	100	18	53	11	M50x1.5	825	895	20	340	400	350	450	18.5	5
CEM 225 M(2P)	465	335	55	110	80	16	49	10	M50x1.5	820	890	20	310	400	350	450	18.5	5
CEM 225 M(4-8P)	465	335	60	140	100	18	53	11	M50x1.5	850	920	20	340	400	350	450	18.5	5
CEM 250 M(2P)	520	375	60	140	100	18	53	11	M63x1.5	925	1015	20	357	500	450	550	18.5	5
CEM 250 M(4-8P)	520	375	65	140	100	18	58	11	M63x1.5	925	1015	20	357	500	450	550	18.5	5
CEM 280 S(2P)	570	405	65	140	100	18	58	11	M63x1.5	970	1075	22	350	500	450	550	18.5	5
CEM 280 S(4-8P)	570	405	75	140	100	20	67.5	12	M63x1.5	990	1075	22	350	500	450	550	18.5	5
CEM 280 M(2P)	570	405	65	140	100	18	58	11	M63x1.5	1025	1125	22	350	500	450	550	18.5	5
CEM 280 M(4-8P)	570	405	75	140	100	20	67.5	12	M63x1.5	1045	1125	22	350	500	450	550	18.5	5
CEM 315 S(2P)	650	500	65	140	100	18	58	11	M63x1.5	1160	1250	24	387	600	550	660	24	6
CEM 315 M(2P)	650	500	65	140	100	18	58	11	M63x1.5	1270	1360	24	387	600	550	660	24	6
CEM 315 L(2P)	650	500	65	140	100	18	58	11	M63x1.5	1270	1360	24	387	600	550	660	24	6
CEM 315 S(4-8P)	650	500	80	170	130	22	71	14	M63x1.5	1190	1280	24	417	600	550	660	24	6
CEM 315 M(4-8P)	650	500	80	170	130	22	71	14	M63x1.5	1300	1390	24	417	600	550	660	24	6
CEM 315 L(4-8P)	650	500	80	170	130	22	71	14	M63x1.5	1300	1390	24	417	600	550	660	24	6
CEM 355 M(2P)	735	645	75	140	110	20	67.5	12	M63x1.5	-	1690	25	420	740	680	800	24	6
CEM 355 L(2P)	735	645	75	140	110	20	67.5	12	M63x1.5	-	1690	25	420	740	680	800	24	6
CEM 355 M(4-8P)	735	645	95	170	140	25	86	14	M63x1.5	-	1720	25	450	740	680	800	24	6
CEM 355 L(4-8P)	735	645	95	170	140	25	86	14	M63x1.5	-	1720	25	450	740	680	800	24	6

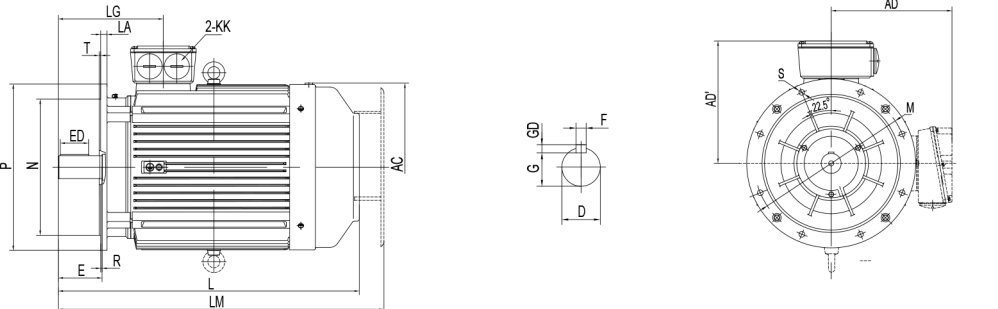
80-132



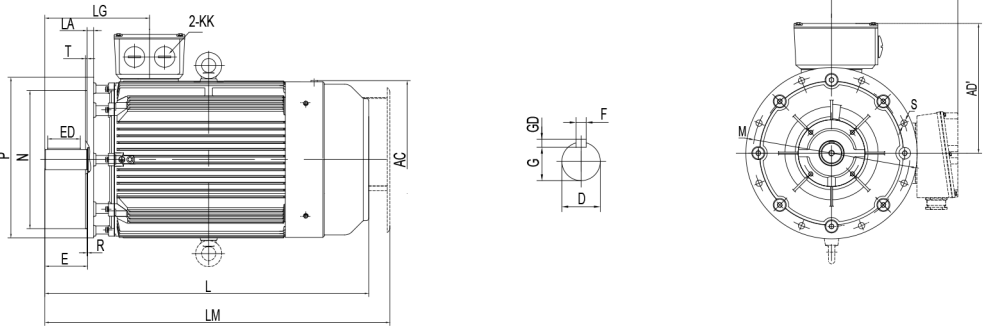
160-200



225-280



315-355





**AUTHORISED DISTRIBUTOR:**



**CE INDUSTRIES PTE LTD**

CE BUILDING

515 YISHUN INDUSTRIAL PARK A  
SINGAPORE 768737

**TEL: +65 6362 6895**

**FAX: +65 6362 6892**

**EMAIL: [ceadmin@ceindustries.com.sg](mailto:ceadmin@ceindustries.com.sg)**